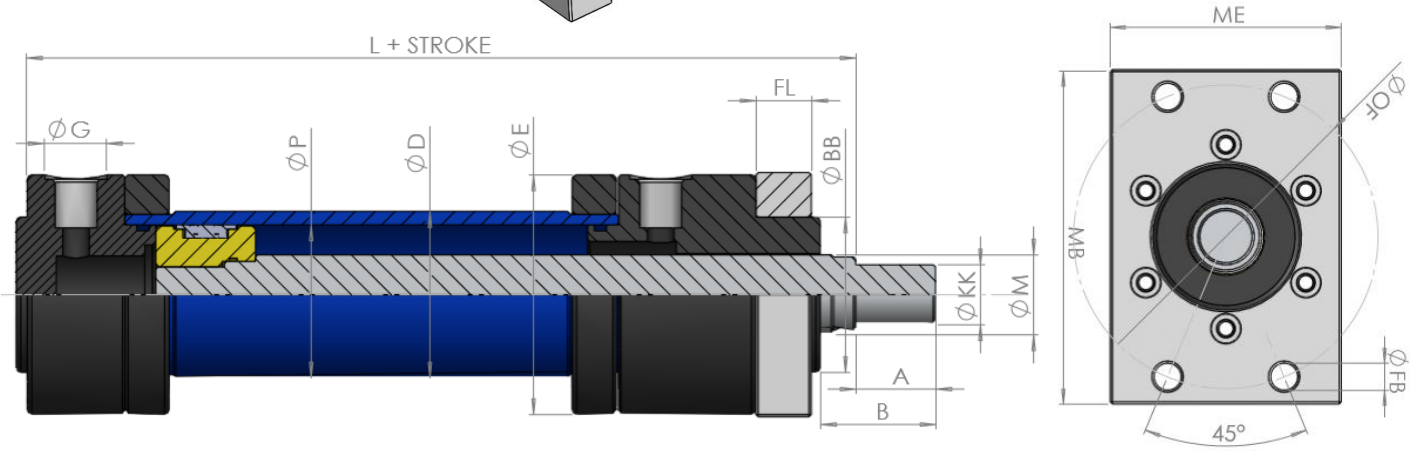
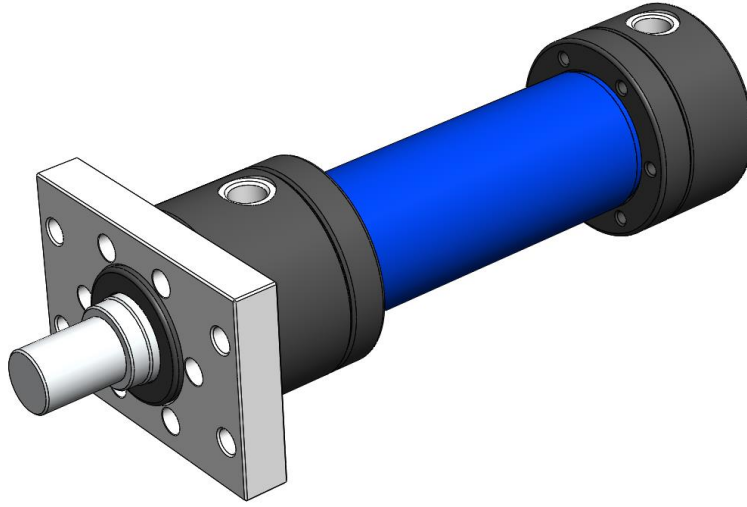


# CETOP R58 H/ISO 6020/1

Çift tesirli hidrolik silindir KS470 B serisi (kalın millî)



$\Phi P$	$\Phi 32$	$\Phi 40$	$\Phi 50$	$\Phi 63$	$\Phi 80$	$\Phi 100$	$\Phi 125$	$\Phi 140$	$\Phi 160$	$\Phi 180$	$\Phi 200$
M	22	28	36	45	56	70	80	90	100	110	140
A	22	28	36	45	56	63	75	85	90	95	112
B	35	42	52	63	76	86	100	110	120	125	165
C	54	61	76	92	112	123	137	150	161	170	210
BB	40	50	60	70	85	106	132	145	160	185	200
D	40	50	60	75	95	115	145	160	180	210	245
E	68	78	98	108	129	158	186	210	240	255	296
G	R1/4	R3/8	R1/2	R1/2	R1/2	R3/4	R3/4	R3/4	R1	R1	R1
KK	M16x 1.5	M20x 1.5	M27x 2.0	M33x 2.0	M42x 2.0	M48x 2.0	M56x 2.0	M64x 2.0	M72x 3.0	M80x 3.0	M100 x3.0
L	-	-	-	-	-	-	-	-	-	-	-
FB	9	9	11	13	17.5	22	22	22	22	26	33
MB	105	115	140	160	182	220	252	280	-	340	415
ME	70	80	90	110	125	150	180	205	240	260	300
OF	92	106	126	145	165	200	235	260	280	320	396
FL	16	16	20	25	32	32	32	35	36	40	42